



BILLINGE CHAPEL END

— SCHOOL & NURSERY —



WEEKLY NEWSLETTER 13th October 2023

Website: www.chapelend.st-helens.sch.uk

Email: chapelend@sthelens.org.uk

Telephone: 01744 678230

Themed Weeks

At Chapel End Primary School we provide a broad curriculum offer. Part of this offer is for all of our children to learn about events from different religions, traditions, cultures and ways of life from around the globe.

Week Beginning

16.10.23

Bullying Prevention

23.10.23

Celebrating Achievements

6.11.23

Valuing Difference

20.11.23

Road Safety Assembly

Dates for your diary

27.10.23

School closes for half term
(re-opens Tuesday 7th
November)

7.11.23

Flu Vaccination

8.11.23

Autumn Disco

17.11.23

Children in Need

8.12.23

Christmas Fair

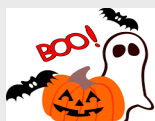
12.12.23

KS1 Nativity

13.12.23 & 14.12.23

EYFS Nativity

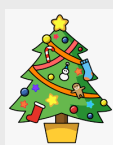
PTFA News



Autumn Disco



We will be holding our Autumn Disco on Wednesday 8th November 5:00-6:15pm. Tickets are priced at £2.00 which will include a drink and a snack for the children. Volunteers of parental help will be essential for this event to go ahead, if you can help at the disco, then please inform the office staff. Tickets are now available to purchase on School Money.



Christmas Fair



This year's Christmas Fair will take place on Friday 8th December from 3:15pm. As in previous years, we will be collecting bottles of wine, filled jam jars, Christmas chocolate/sweets and other Christmas groceries. We will welcome donations at anytime after the half term break.

Tea with Santa

Unfortunately, Santa cannot make it to our Christmas Fair this year so we will be unable to open our Grotto. However, Santa has very kindly agreed to make it a Christmas to remember for all pupils at Chapel End by visiting us on Thursday 14th December at 3:15pm to have tea with the children - more information to follow after half term.

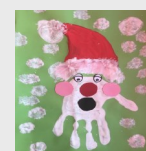
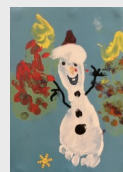


Christmas Cards



Thank you for all your Christmas card orders, we raised a fantastic £220 for school funds.

The children will be given the products as soon as they are delivered to school.



PTFA News

Easy Fundraising App

The PTFA are registered with an organisation called Easy Fundraising and we would love it if you could use it to support school. The concept is very simple, you need to download the Easy Fundraising app then nominate Billinge Chapel End PTFA as your chosen cause. If you do this before the end of October, the school will be given an automatic £2 bonus donation without you spending anything.

If you then choose to enter online shopping sites through the Easy Fundraising app, the school will be given a percentage of your spending. Insurance/Utility Bill sites such as Compare the Market are particularly good and school receives up to £15 each time you use the app.

Many thanks for your anticipated support, we know that in the current climate it is difficult to support lots of charities but this is an opportunity to help out that doesn't cost you anything — literally money for nothing!!



NON-UNIFORM DAY—FRIDAY 20TH OCTOBER

To raise awareness during Bullying Prevention week, we would like to ask all children to celebrate their own individual unique style. To do this we are having a non-uniform day on Friday 20th October.

Autumn Leaves

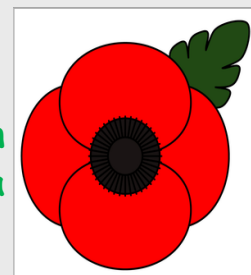


As we move further into the Autumn months, the nights are drawing in and the leaves are starting to fall, we would like to remind everybody to take extra care when walking on our paths around the school grounds, although every effort is made to keep them clear, with the nature of the setting and being surrounded by trees it isn't always possible and as a result the paths can be quite slippery.



Poppy Appeal

Poppies are now on sale from the school office. A donation pot is in the office for parents to donate money and take a poppy from the box.



Our school Value of this half term is Kindness





Pupil of the Week

Wonder Wall

Nursery

Nyla Aslam

Adalia Brew

Reception

Edith Raven

Oliver Thompson-Taylor

Y1

Sophia-Rose Comiskey

Emilia Stein

Y2

Harry Hudson

Alice Jackman

Y3

April Cameron

Joel McLean

Y4

Toby Skinner

Hugo Williams

Y5

Matilda Newcombe

Eleanor Dignam

Y6

Nicole Wilde

Izaak Killa

Class Attendance for w/c 2nd October

<u>Class</u>	<u>% attendance for week</u>
Nursery	94.2
Reception	96.5
Year One	97.1
Year Two	99.1
Year Three	96.5
Year Four	93.9
Year Five	95.6
Year Six	94.4

Well done to Reception and Years 1, 2 and 3 that were above our target of 96%!!!

Volunteers

A number of classes in school need volunteers to help with reading. If you are able to spare a morning or afternoon, or even an hour to help in school, we would be extremely grateful. Please inform Mrs Montrose when you would be able to help and if you have a preference for a particular age group.

Thank you for your support.



School Diary — Next Week in School

Monday 16th October

Multi sports Years 1, 2 & 3 (**last one**)

Tuesday 17th October

Football Years 1 & 2 (5 of 6)

Keyboard lessons

Guitar lessons

Wednesday 18th October

Toddler Group 9:30-11:00am (**last one, starts again 08.11.23**)

Judo 12.15-1pm (**last one**)

Thursday 19th October

Football 3, 4 & 5 (5 of 6)

Swimming Year 5 (6 of 12)

Drumming lessons 2.30-3.30pm

Friday 20th October

Non-uniform day.

Choir 12-12.30pm



Term Dates for 2023-2024

	Opens on	Closes on
Autumn Term 2023	Wed 6 Sept	Fri 27 Oct
Autumn Term 2023	Tues 7 Nov	Thurs 21 Dec
Spring Term 2024	Mon 8 Jan	Fri 9 Feb
Spring Term 2024	Mon 19 Feb	Thurs 28 March
Summer Term 2024	Mon 15 April	Thurs 23 May
Summer Term 2024	Mon 3 June	Tues 23 July

School also closed:
May Day—Monday 6th May 2024

Term Dates for 2024-2025

	Opens on	Closes on
Autumn Term 2024	Wed 4 Sept	Thurs 24 Oct
Autumn Term 2024	Mon 4 Nov	Fri 20 Dec
Spring Term 2025	Mon 6 Jan	Thurs 13 Feb
Spring Term 2025	Mon 24 Feb	Fri 4 April
Summer Term 2025	Tues 22 April	Thurs 22 May
Summer Term 2025	Mon 2 June	Tues 22 July

School also closed:
May Day—Monday 5th May 2025

These term date cards are now available to
collect at the school office.

Y6 Residential - 20th to 22nd May 2024

Manor Adventure, Willersley Castle, Peak District

For the children that are attending the Y6 residential in May 2024, the payment balance has now been added to your child's SchoolMoney account. It has been set up so that you can pay as much as you want, when you want, but must be paid in full by 31st March 2024.

Spending money of 3 x £1 coins (in an envelope please) can be handed to the school office any time from now until May.

A meeting will be arranged for April 2024 with detailed information regarding activities, room arrangements and kit lists. You will also be able to ask any questions you may have and discuss, if necessary, any special needs.

Breakfast Club

Breakfast Club runs from 7.30-8.50am each morning. It costs £6 per session and should be paid IN ADVANCE via SchoolMoney.

After School Club

After School Club runs from 3.15-5.30pm each evening. It costs £8 per session and, like the Breakfast Club, should be paid IN ADVANCE via SchoolMoney.

Both of these clubs are extremely popular and we are limited to numbers.

IMPORTANT—We do have procedures in place for booking places in both of these clubs. Firstly, please email school by 1.00pm on a Friday for the sessions you would like booking for the following week (chapelend@sthelens.org.uk). The costs for both clubs are shown above. When you book by email you then need to total the cost of your sessions and add this to your child's SchoolMoney account. You can add this in the Club top-up section on the account.

If you need to attend Breakfast Club in an emergency, on a day that you haven't booked, please ring Breakfast Club on that morning and see if there is a place available. Likewise, if you need After School Club and you haven't booked in please ring school and we can see if there is a space.

If you need to cancel a booking on the day please ring school and speak to a member of staff to inform them that you don't need the place on that day. This place can then be offered to another child. If you need to cancel a future booking you can do this by email.

Please be aware that staff have the authority to refuse a booking if the SchoolMoney account is not up to date.

Change of Meal Arrangements

If you would like to change your child's meal arrangements after half term, please email school at chapelend@sthelens.org.uk by Wednesday 25th October.

Please note that meal arrangements can only be changed after each school holiday.

Fish Friday Payments

Please remember Fish Friday is paid **in advance of the term.**

Fish Friday for next half term is **£15.00 (6 weeks).**



School Swimming Lessons

Lessons will take place on a Thursday mornings from September to December.

The dates are as follows:

19th October 2023

9th November 2023

16th November 2023

23rd November 2023

30th November 2023

7th December 2023

14th December 2023

The swimming lessons will take place at Ashton Leisure Centre and transport will be arranged by school.

Below are the swimwear requirements set by the local authority.

'Pupils should be encouraged to wear swimming caps during the lessons or hair must be tied back. Correct swimwear must be worn at all times.

Girls must wear a one-piece swimsuit (no two piece at all). No Wet Suits.

Boys must wear swimming trunks or shorts of no longer than mid thigh length with no pockets (no Bermudas or long shorts are acceptable as these can become dangerous when the pockets become full of water). No Wet Suits.

No Jewellery to be worn including all types of earrings.

Any child attending the pool without the correct equipment will not be allowed to swim.'

Any armbands/floats etc will be provided.



Nasal Flu Immunisations

Please see the poster at the bottom of the newsletter regarding this years Nasal Flu Programme. The immunisation team will be visiting our school on Tuesday 7th November. Your child will only receive it if you have given consent.



POLITE REMINDER

Please note that unless you have a blue badge or have an arranged agreement with Mr Hewitt, parking on the school car park is not permitted.

Should you have a badge and haven't already done so, please bring to the school office so we can we take a copy for our records.



Winter Uniform



After the half term holiday all children should be in full winter uniform.

Boys Uniform

Red round-neck school jumper preferably displaying the Chapel End Primary School emblem.

White polo T-shirt

Grey trousers

Plain grey socks

Black school shoes

Girls Uniform

Red round-neck school jumper or red school cardigan preferably displaying the Chapel End Primary School emblem.

White polo T-shirt

Plain grey pinafore, grey skirt (appropriate length) or grey trousers

Grey tights

Grey socks (recommended for winter)

Black school shoes

Haircuts

We do not permit children to have extreme haircuts such as shaved patterns or Mohican styles which cause a distraction to learning, as they are inappropriate for the school setting. Any child, male or female, with long hair length will be asked to tie their hair up.

Hair Accessories

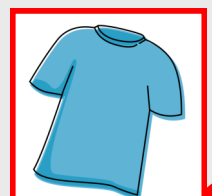
We ask that hair accessories such as headbands, clips, bows and bobbles are red or black in colour. Please also ensure that they are kept to an acceptable size and keep them as plain as possible.

Nursery

Children of nursery age are permitted to wear black or grey jogging trousers to support gross motor skill activities and toilet training.

Underlayers

Due to the weather becoming colder, we would like to remind parents and carers that children can wear underlayers sometimes referred to as 'skins' beneath their normal uniform or PE kit.





Mersey Care
NHS Foundation Trust

St Helens Immunisation Team

We will be attending your child's school between September and December.

All children in nursery to year 11 will be offered a Flu Nasal Spray to protect them against Flu this winter!

We will be in your child's school on: **TUESDAY 7TH NOVEMBER 2023**

Contact details

St Helens Immunisation Team - Telephone: 01744 415 645
(Monday to Friday, 9am to 5pm)

Flu: 5 reasons to vaccinate your child

1. Protect your child

The vaccine will help protect your child against flu and serious complications such as bronchitis and pneumonia

2. Protect you, your family and friends

Vaccinating your child will help protect more vulnerable friends and family

3. No injection needed

The nasal spray is painless and easy to have

4. It's better than having flu

The nasal spray helps protect against flu, has been given to millions of children worldwide and has an excellent safety record

5. Avoid costs

If your child gets flu, you may have to take time off work or arrange alternative childcare



Autumn '23



Our **ComputerXplorers** Holiday Tech Clubs

ComputerXplorers leads the way in providing technology-based activities that are both inspirational and educational. Our unique brand of hands-on programmes are always full of fun and interaction. We encourage children to find out what's behind the technology, building in collaboration, creativity, critical thinking and confidence along the way!

AUTUMN TECH CLUB

ST HELENS

Rainford
High School

Higher Ln,
Rainford, WA11 8NY

Wed 1st &
Thurs 2nd November

9am-3pm (half days available)

Morning sessions include Coding &
Game Design with a seasonal **MINECRAFT** afternoon challenge!

Scan the QR or follow the link for full information
& bookings:

bolton.computerxplorers.co.uk



computerxplorers.co.uk/bolton-wigan

Follow us @CompXBolton

T: 01942 676407

E: Bolton@computerxplorers.co.uk

ComputerXplorers Bolton & Wigan, 621 Leigh Road, Leigh, WN7 1UA





30th October – 3rd November
9:30am – 3:30pm or 8:00am to 6:00pm



Reception – Year 6



**Childcare vouchers &
tax-free childcare schemes
accepted**

OCTOBER HALF-TERM HOLIDAY COURSES

Rivington Primary School

Tennis Street North, St Helens
WA10 6LF

£21
a day

Book a full week
& get 1 day **FREE**

Scan to book



www.wearelsc.co.uk/october

0800 032 1806

info@wearelsc.co.uk

@LSCMerseyside



Letter to parents and guardians from Merseyside Police re. Halloween and Bonfire Night

We are writing to all parents and guardians to ask for your help over the upcoming Halloween and Bonfire Night period.

We want everyone to have fun and we'll be working hard to keep you safe, but we need your help:

Know where your children are

- Encourage kids to go to local events that are being organised, or try a spooky film together
- If your children are going out (particularly on the 30th and 31st of October), make sure you know where they're going. If possible, drop them off and pick them up
- Don't let your children hang around the street
- If they're going somewhere local – walk there with them
- Have an agreed time when they need to be home
- Don't buy fireworks or eggs and flour for them, and don't let them take it out of the house

Know the risks

- Throwing things at cars, buses, shops and houses can hurt people – drivers might swerve if they get distracted and cause a crash, or someone might get hurt by broken glass (and scratched paintwork can be very expensive to fix)
- Getting into trouble with the police can lead to a criminal record, which means not being able to go on holiday to countries like the USA, and not being able to do certain jobs
- Messing around with fireworks is dangerous – some burn as hot as 1,200 degrees - hot enough to melt glass and cause serious or fatal injuries

Know the law

If a young person under the age of 16 commits any of the offences below, the parent/guardian will have to pay the fine.

- A person under the age of 16 can be arrested and fined if found with an unlit firework
- A person under the age of 16 can also be arrested and fined if they throw or light a firework or make a bonfire
- A person under the age of 16 can be arrested and fined for throwing things like eggs, flour, paint or other objects at people, vehicles or property

Thank you for your help and support. By working together, we can keep your children safe this Halloween and Bonfire Night.

Merseyside Police