

# BILLINGE CHAPEL END

## — SCHOOL & NURSERY —

WEEKLY NEWSLETTER

9th September 2022

Website: [www.chapelend.st-helens.sch.uk](http://www.chapelend.st-helens.sch.uk)

Email: [chapelend@sthelens.org.uk](mailto:chapelend@sthelens.org.uk)



### Themed Weeks

At Chapel End Primary School we provide a broad curriculum offer. Part of this offer is for all of our children to learn about events from different religions, traditions, cultures and ways of life from around the globe.

### Week Beginning

12.9.22

Roald Dahl

19.9.22

Mental Health

26.9.22

Michael and All Angels

3.10.22

Black History

10.10.22

Sukkot

17.10.22

Conflict and resolution



### Welcome back

Welcome back to all of our existing school families and a very warm welcome to Billinge Chapel End Primary School to our new starters this year.

Myself, the staff and governors are looking forward to working in partnership with all of our parents and carers to provide the best opportunities for all of our children.

We have many fun packed activities planned this year including ideas for our 50th anniversary celebrations.

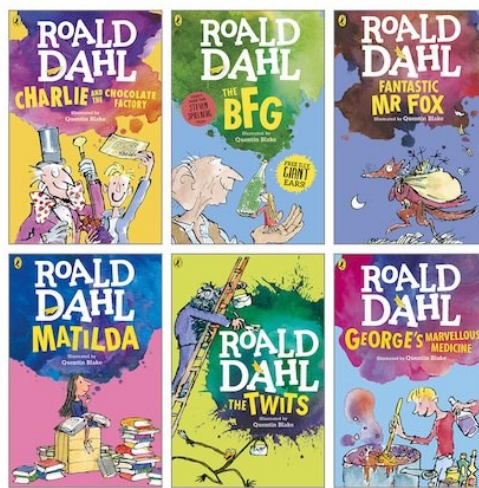
Mr Hewitt

Our school value for this half term is  
**KINDNESS**



It is tradition at Billinge Chapel End that we celebrate the works of Roald Dahl in the month of his birthday which is September. This year we are celebrating his works on Friday 16th September. Children can attend school in either clothing matching his favourite colour 'YELLOW' or a favourite Roald Dahl character dress up.

Year 5 and EYFS have PE on a Friday so please could they wear trainers on this day.



### Toddler Group



Our very popular toddler group will be up and running again on Wednesday 14th September. Sessions are every Wednesday morning at 9:30am-11am.

There are play activities, songs and rhymes for the children and hot drinks, biscuits and toast available for adults (the children have biscuits too).

We look forward to seeing you there!

## Breakfast and After School Clubs

**Reminder:** Bookings that are persistently not made the week before the required session will be charged at:

Breakfast Club—£6.00

After School Club—£8.00

**NB:** Please send all bookings via email to [chapelend@sthelens.org.uk](mailto:chapelend@sthelens.org.uk) by 1pm on Fridays for sessions required the following week.

## Change of Meal Arrangements

If you would like to change your child's meal arrangements after half term, please email school at [chapelend@sthelens.org.uk](mailto:chapelend@sthelens.org.uk) by Wednesday 19th October.

## Dinner Money Payments

Please note dinner money is paid **in advance of the week** via SchoolMoney. Dinner money is £2.50 per day (£12.50 per week).

When you log on to SchoolMoney the figure shown is your current balance either in credit or debit as at that particular day.

### **Debit Balance**

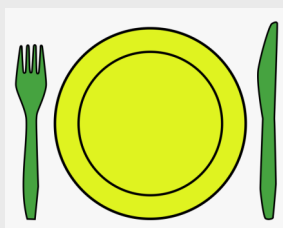
Please remember to pay the figure that is shown as owing **PLUS** the cost of any remaining meals due to be taken by your child for that week.

### **Credit Balance**

If your balance is in credit, please ensure you have enough credit for any remaining meals due to be taken by your child for that week. If not, a further payment will need to be paid to bring your account up to date.

## Fish Friday Payments

Please remember Fish Friday is paid **in advance of the term**. Fish Friday this term is **£15.00 (6 weeks)**. Please follow the same instructions above.



## **Instrumental Tuition at Chapel End Primary School**

**We are delighted to let you know that The Schools Music Service will be returning to provide instrumental music tuition from this term onwards.**

**We currently offer classes on cornet, guitar, trumpet and trombone in school, in small group half hour sessions, during the school day.**

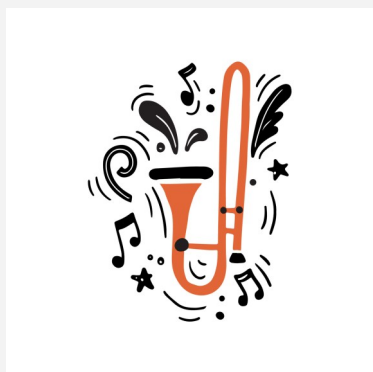
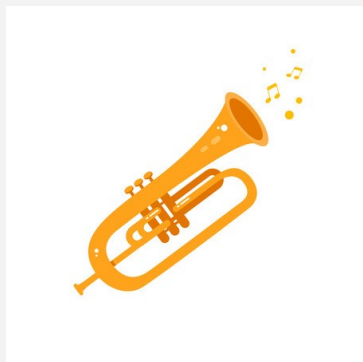
**It is our belief that music greatly enriches the life of a child, both academically and socially.**

**If you would like more information about classes here is a link to their website where you can see how everything works -**  
**[www.schoolsmusicservice.co.uk](http://www.schoolsmusicservice.co.uk)**

**If you know what instrument your child would like to learn, or you have learned with them before, you can register for classes on their website and they will sort everything out for you.**

**Please watch their short video for more information.**

**Also, if your child has had music tuition with them in the previous academic year, please ensure that you have made a new application for this year's tuition to put them back onto the teacher's pupil list.**



### **Instrumental lessons**

**Instrumental lessons with the Schools Music Service will begin in the week beginning 26th September for children currently registered with them.**

**Please note Guitar lessons will start week commencing 3rd October.**

## **School Uniform**

A full list is given below. Children may continue to wear Summer uniform throughout September as September is often quite warm but all pupils should be in full Winter uniform by the second half of the Autumn term.

### **Boys Uniform**

Red round-neck school jumper if possible displaying the Chapel End Primary School emblem.  
White polo T-shirt  
Grey trousers  
Grey short-trousers in summer  
Plain grey socks  
Black school shoes

### **Girls Uniform**

Red round-neck school jumper or  
red school cardigan if possible displaying the Chapel End Primary School emblem.  
White polo T-shirt  
Plain grey pinafore, grey skirt (appropriate length) or grey trousers  
Red gingham dress in summer (red and white checks)  
Grey tights  
White socks (recommended for Summer) Grey socks (recommended for Winter)  
Black Shoes

### **PE Kits**

Your child will participate in PE lessons on specified days each week. Parents will be informed which days their child has PE and children can wear their PE kit all day. If a child has an after-school PE club, they will wear their uniform and change into their kit at the end of the school day.

Plain white round neck T-shirt  
Plain red shorts  
Plain red sweatshirt/ hoodie  
Plain black jogging bottoms  
Trainers suitable for indoor and outdoor physical activity.

**Fore more information on PE, swimming, hair etc please read our Uniform Policy on Chapel End Spider under Essential Information, Policies.**



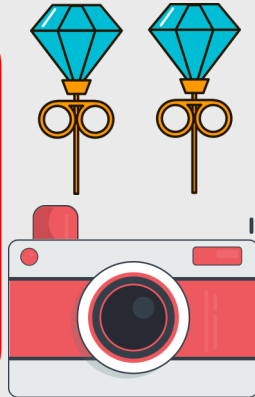


### Attendance and holiday requests

The Local Authority and DFE are now working very closely with schools to ensure that all children are attending school regularly and consistently. If a child is missing school regularly or is persistently late their academic progress can be seriously jeopardised. For example; a child with a 90% attendance rate at the end of the year will have missed four whole weeks of school and 100 hours of learning opportunities. As a school, we have a threshold agreed with the LA of **96%** attendance as a minimum and our Education Welfare Officer will be proactive in contacting parents/carers of children whose attendance is falling below this threshold.

### Earrings

It is school policy that children do not wear earrings in school, this includes earring with plasters covering them. We would like to ask all parents/carers to remove children's earrings before they arrive at school. Teachers are authorised to support children in removing earrings if they wear them in school.



### School Photographs

The school photographer will be in school on Thursday 15th September. Children will have individual photos and photos with siblings. More information about how to purchase a photo will follow.

### Medical Appointments during school hours

Last year **60** school sessions were missed through pupil's medical appointments being arranged in school time. All medical appointments, including dentist and doctor's appointments, should be arranged, whenever possible, outside of school hours. **Please note that in order to satisfy DFE requirements, when appointments are taken in school time, parents must provide medical evidence to support the absence for example by providing an appointment card or hospital appointment letter, clearly marked for the attention of the office staff.** Thank you for your cooperation with this.

### PE Kit

Just a reminder that children should come to school in their PE kit on the day they will be doing PE.

EYFS Friday

Y1 Tuesday

Y2 Tuesday

Y3 Thursday

Y4 Tuesday

Y5 Friday

Y6 Monday





Congratulations to the following children who were praised this week. Children who are attending school from each class have their work placed on Mr Hewitt's Wonder Wall to celebrate their achievements.

	<u>Pupil of the Week</u>	<u>Wonder Wall</u>
<b>Nursery</b>	Everybody	Everybody
<b>Reception</b>	Everybody	Everybody
<b>Y1</b>	Matilda Campbell	Alan Mehrjouei
<b>Y2</b>	James Ennis	Amias Aslam—Gallagher
<b>Y3</b>	Barnaby Aspinall	Everybody
<b>Y4</b>	George Broderick	Victoria Malowicz
<b>Y5</b>	Theo Boylan-McCann	Luca Hanna
<b>Y6</b>	Joseph Fisher	Layla Hitchen

### School opening hours from September

To ensure that we achieve the new DFE statutory school hours for primary schools in September we are bringing the start time of the school day forward to 8:45am for all classes. Doors will open at 8:40am and it is expected that all children are settled for registration at 8:45am. Classroom doors will be closed at 8:55am and children arriving after this time will come through the office and be marked as late.

Nursery 15 hours children will be collected at 11:40am, with 30 hours children being collected at 3pm. The EYFS door will remain open from 3pm- 3:15pm so Reception children can be collected.

The end of the school day for children Year 1—Year 6 is 3:15pm.

### School Diary—Next Week in School

#### Monday 12th September

Y1 / Y2 Football (1 of 5)

3:15-4:15

#### Thursday 15th September

School Photographs

(Individual and Sibling)

#### Tuesday 13th September

Y3 / Y4 Football (1 of 5)

3:15-4:15

#### Friday 16th September

Roald Dahl Dress up day

#### Wednesday 14th September

Toddler Group 9:30-11:00am

Fencing Session (1 of 5)

### Term Dates for 2022-2023

Autumn Term 2022	Opens on Mon 5 Sept	Closes on Thurs 20 Oct
Autumn Term 2022	Mon 31 Oct	Wed 21 Dec
Spring Term 2023	Wed 4 Jan	Thurs 9 Feb
Spring Term 2023	Mon 20 Feb	Fri 31 March
Summer Term 2023	Mon 17 April	Thurs 25 May
Summer Term 2023	Mon 5 June	Wed 19 July

School also closed:

May Day—Monday 1st May 2023



# Free School Meals & Pupil Premium

## Free School Meals

Your child will be eligible for free school meals if you (or your partner) are in receipt of any of the following:

- Income Support
- Income-based Jobseeker's Allowance
- Income-related Employment and Support Allowance
- support under Part VI of the Immigration and Asylum Act 1999
- the guaranteed element of Pension Credit
- Child Tax Credit (but not Working Tax Credit) and your annual gross income (as assessed by HM Revenue and Customs) is not more than £16,190
- Working Tax Credit 'run on' - paid for 4 weeks after you stop qualifying for Working Tax Credit

Universal Credit and net earnings, from your last assessment period, is not more than £616.67 per month. (If your household's net earnings change each month then they should not exceed £1,233.34 in the last two consecutive months or £1,850 in the past 3 months).

Once eligible, your child will continue to receive free school meals in primary or secondary school until the end of their current phase of education, i.e. primary (Year 6) or secondary (Year 11). After this period, you may need to reapply.

## Pupil Premium

Your child's school will also receive additional funding if you are in receipt of a qualifying award listed above. It is therefore important that you claim free school meals and the pupil premium even if your child does not wish to take a school meal.

### Important note for parents of children in Reception, Y1 and Y2

As you are aware, all children in Reception, Year 1 and Year 2 are entitled to a universal free school meal. Parents and carers who receive the qualifying benefits (listed above) should still make an application for free school meals. This is because our school can get additional government funding dependent on the number of children that qualify for statutory free school meals (based on your entitlement to certain benefits and awards).

**Even if your child does not wish to take a universal free meal please still claim to enable school to get the funding.**

### **How to Apply**

You can apply online as part of your initial claim for housing benefit / council tax reduction or you can complete the separate free school meals application form. Your eligibility will be checked to claim free school meals electronically so you will not normally need to provide supporting evidence. If you are successful you and our school will be informed of the decision.

### **Contact details**

Telephone:	01744 676666
Write to:	St Helens Council, Revenues and Benefits, PO Box 10592, Nottingham NG6 6DP
Email:	educationbenefits@sthelens.gov.uk