

# B ILLINGE CHAPEL END

## — SCHOOL & NURSERY —

WEEKLY NEWSLETTER

7th October 2022

Website: [www.chapelend.st-helens.sch.uk](http://www.chapelend.st-helens.sch.uk)

Email: [chapelend@sthelens.org.uk](mailto:chapelend@sthelens.org.uk)



### Themed Weeks

At Chapel End Primary School we provide a broad curriculum offer. Part of this offer is for all of our children to learn about events from different religions, traditions, cultures and ways of life from around the globe.

### Week Beginning

10.10.22

Sukkot

17.10.22

Conflict and resolution

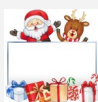
### Date for your diary

Parents Evenings:

12.10.22 / 13.10.22

Christmas Fair

2.12.22



### Parents Evenings

Just a reminder that our Parents Evenings are taking place next week in school.

Wednesday 12th October

3:30-6:30pm in classrooms

Thursday 13th October

1:30-4:30pm

Reception in the EYFS building office

Year 1 in the Year 1 area

Year 2 in the Year 2 classroom

Year 3 in the downstairs garden room

Year 4 in the infant hall

Year 5 in the Nest

Year 6 in the teacher's planning room

Mr Hewitt

### Crossing Patrol

Following a health and safety audit completed by St Helens Council, our crossing patrol has reverted to be placed outside the school gates. Please can I ask families to cross with Miss Tabern and not further up the road in the interest of safety.

Thank you



### Admissions to Secondary School - September 2023

Parents of current Year 6 pupils can now apply online for a secondary school place for September 2023. The closing date for applications is 31st October 2022.

[www.sthelens.gov.uk/schools](http://www.sthelens.gov.uk/schools) and [education/school admissions/applying for secondary schools for 2023.](http://www.sthelens.gov.uk/education)



### Admissions to Primary School - September 2023

To qualify for admission to Reception in September 2023, children must be aged four on or before 31st August 2023.

Online applications are now open and the closing date is 15th January 2023.

[www.sthelens.gov.uk/schools](http://www.sthelens.gov.uk/schools) and [education/school admissions/](http://www.sthelens.gov.uk/education) applying for primary schools for 2023.



### Admissions to Nursery - January, April & September 2023

If your child turns three after 31st August 2022 and you wish to apply for January, April or September 2023 admission please email [schooladmissions@sthelens.gov.uk](mailto:schooladmissions@sthelens.gov.uk) to request an online application form as the online system has now closed.





## Winter Uniform



After the half term holiday all children should be in full winter uniform.

### Boys Uniform

Red round-neck school jumper preferably displaying the Chapel End Primary School emblem.

White polo T-shirt

Grey trousers

Plain grey socks

Black school shoes



### Girls Uniform

Red round-neck school jumper or red school cardigan preferably displaying the Chapel End Primary School emblem.

White polo T-shirt

Plain grey pinafore, grey skirt (appropriate length) or grey trousers

Grey tights

Grey socks (recommended for winter)

Black school shoes



### Haircuts

We do not permit children to have extreme haircuts such as shaved patterns or Mohican styles which cause a distraction to learning, as they are inappropriate for the school setting. Any child, male or female, with long hair length will be asked to tie their hair up.

### Hair Accessories

We ask that hair accessories such as headbands, clips, bows and bobbles are red or black in colour. Please also ensure that they are kept to an acceptable size and keep them as plain as possible.

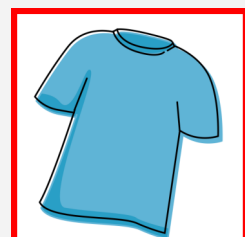
### Nursery

Children of nursery age are permitted to wear black or grey jogging trousers to support gross motor skill activities and toilet training.



### Underlayers

Due to the weather becoming colder, we would like to remind parents and carers that children can wear underlayers sometimes referred to as 'skins' beneath their normal uniform or PE kit.





## School Swimming Lessons



We are very pleased to be able to offer all children in Years 5 & 6 the opportunity to visit the swimming baths once a week over half a term period to participate in swimming lessons. Lessons will take place on a Friday afternoon between 1:00pm and 2:00pm.

The dates for each year group are as follows:

### Year 6

4th November 22  
11th November 22  
18th November 22  
25th November 22  
2nd December 22  
9th December 22  
16th December 22

### Year 5

24th February 23  
3rd March 23  
10th March 23  
17th March 23  
24th March 23  
31st March 23

The swimming lessons will take place at Queens Park Health & Fitness Centre and transport will be arranged by school.

Below are the swimwear requirements set by the local authority.

*'Pupils should be encouraged to wear swimming caps during the lessons or hair must be tied back. Correct swimwear must be worn at all times.*

*Girls must wear a one-piece swimsuit (no two piece at all). No Wet Suits.*

*Boys must wear swimming trunks or shorts of no longer than mid thigh length with no pockets (no Bermudas or long shorts are acceptable as these can become dangerous when the pockets become full of water). No Wet Suits.*

*No Jewellery to be worn including all types of earrings.*

*Any child attending the pool without the correct equipment will not be allowed to swim.'*

**Any armbands/floats etc will be provided.**

**A letter has been sent out to parents of Year 6 this week containing more details and a letter to parents of Year 5 children will be sent out nearer the time.**



### \*\*\*OPEN DAY\*\*\*

We are very pleased to be able to welcome families to come into our school and visit us for our open morning on Wednesday 19th October. We are open from 9:30-11:00am. Please do feel free to come along and join us to meet our staff and our children and to have a look around to see what our school has to offer. We are open to families of prospective pupils and also to families of current pupils.

Everyone is welcome at Chapel End and we look forward to a lovely morning meeting you all.





BILLINGE CHAPEL END PRIMARY SCHOOL

# OPEN DAY

Places available for September 2023

**WEDNESDAY 19TH**  
October AT 9:30AM

Meet our staff and children

Can't make the day? Please ring the school office to book a tour of the school at a time that is convenient for you!

 **01744 678230**



### Wow — The Walk to School Challenge

**REMINDER:** We are once again taking part in the Living Streets Walk to School Challenge. We are trying to encourage as many children as we can to walk, park and stride, cycle or scoot to school. Your child will log how they have travelled each day, if they travel sustainably at least once a week for a month, they will be rewarded with a badge.





## Play Equipment on School Grounds

Can we politely remind parents / guardians to please ensure that your children DO NOT play on the Trim Trail or the Climbing Frame with Slide before or after school. Thank you for your co-operation with this.



## Toddler Group

Our very popular toddler group is up and running again. Sessions are every Wednesday morning at 9:30am-11am.

There are play activities, songs and rhymes for the children and hot drinks, biscuits and toast available for adults (the children have biscuits too).

We look forward to seeing you there!





### Year 3 Football Tournament



On Wednesday of this week some of our Year 3 children should have gone to Ruskin Drive to participate in a football tournament, however, due to the severe weather conditions on the day it unfortunately had to be cancelled at the last minute. Another date will be arranged later in the school year.



### Autumn Leaves

As we move further into the Autumn months, the nights are drawing in and the leaves are starting to fall, we would like to remind everybody to take extra care when walking on our paths around the school grounds, although every effort is made to keep them clear, with the nature of the setting and being surrounded by trees it isn't always possible and as a result the paths can be quite slippery.



### Christmas Cards

Just a reminder that today 7th October is the final day for any orders for cards, paper, mugs etc, and all artwork should have been returned to school to enable us to send them off. If anybody still has any outstanding orders they wish to place could they please make sure they are placed today and the artwork returned to the school office by the end of the school day. All orders should be placed online following the instructions on the form and then the artwork will be collected from school on Monday 10<sup>th</sup> October. Any outstanding orders after today will have to be sent by yourselves directly to the Christmas card company. Products will be delivered to school in good time for Christmas. Thank you to all that have already placed orders. We will let you know as soon as they arrive in school. Your support is very much appreciated. Mrs Grimshaw.





## Volunteers

A number of classes in school need volunteers to help with reading. If you are able to spare a morning or afternoon, or even an hour to help in school, we would be extremely grateful. Please inform Mrs Trivass when you would be able to help and if you have a preference for a particular age group. Thank you for your support.

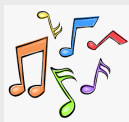


## Instrumental lessons

Instrumental lessons with the Schools Music Service commenced at the beginning of this week. They will now run on a weekly basis as follows:

**Guitar lessons are every Tuesday.**

**Brass lessons are every Wednesday.**



## Scholastic Book Club

Our new Scholastic Book Club is up and running!

Today your child will have brought home the latest Scholastic Book Club leaflet.

Go to <https://schools.scholastic.co.uk/billinge-chapel-end/digital-book-club> to browse the latest books and order and pay online. Your order will then be delivered to school. Please place your order by Monday 17th October. Thank you.



## Wigan Observer - School Starters Supplement

The Wigan Observer Newspaper visited school on Tuesday 4th October to take a photograph of our new Reception class. The photograph will be published in a special 'School Starters 2022' supplement sometime in the autumn, further details of exactly when will follow as soon as we know.



## E Safety

I would like to direct all parents and carers to the E Safety section of our school website. Information about how to add parental controls to your child's digital devices along with many more useful tips can be found on there.







# PTFA News



## Autumn Disco



We will be holding our Autumn Disco on Wednesday 2nd November 5:00 - 6:15pm. Tickets will be priced at £2.00 which will include a drink and a snack for the children. Children may come to the disco dressed in either their Halloween costume or in bright fireworks colours. Volunteers of parental help will be essential for this event to go ahead, if you can help at the disco, then please inform the office staff. Tickets are now available to purchase on School Money.

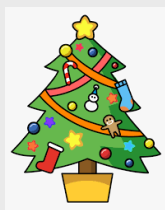
## Chester Shopping Trip



Our annual Christmas Shopping Trip this year will take place on Saturday 26th November. We will be leaving school at 9am and will be picked up in Chester at 5pm, allowing plenty of time to browse the Christmas markets, take in the sights of Chester or just indulge in some shopping and a spot of lunch. Tickets are priced at £12.50 and are on sale from the school office.



## Christmas Fair



This year's Christmas Fair will take place on Friday 2nd December from 3:15pm. As in previous years, we will be collecting bottles of wine, filled jam jars, Christmas chocolate / sweets and other Christmas groceries. The focus in the first week back after half term will be Christmas chocolate / sweets. Any child who brings a donation of Christmas chocolate / sweets will be given a raffle ticket and entered into a draw during Friday's assembly to win a small selection box.



## Tea with Santa

Unfortunately, Santa cannot make it to our Christmas Fair this year so we will be unable to open our Grotto. However, Santa has very kindly agreed to make it a Christmas to remember for all pupils at Chapel End by visiting us on Thursday 8th December at 3:15pm to have tea with the children - more information to follow after half term.



## Breakfast and After School Clubs

**Reminder:** Bookings that are persistently not made the week before the required session will be charged at:

Breakfast Club—£6.00

After School Club—£8.00

**NB:** Please send all bookings via email to [chapelend@sthelens.org.uk](mailto:chapelend@sthelens.org.uk) by 1pm on Fridays for sessions required the following week.

## Change of Meal Arrangements

If you would like to change your child's meal arrangements after half term, please email school at [chapelend@sthelens.org.uk](mailto:chapelend@sthelens.org.uk) by Wednesday 19th October.

## Dinner Money Payments

Please note dinner money is paid **in advance of the week** via SchoolMoney. Dinner money is £2.50 per day (£12.50 per week).

When you log on to SchoolMoney the figure shown is your current balance either in credit or debit as at that particular day.

### Debit Balance

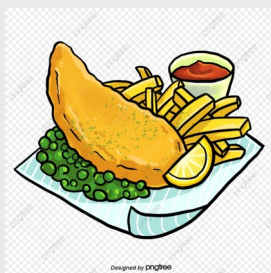
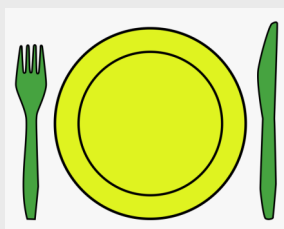
Please remember to pay the figure that is shown as owing **PLUS** the cost of any remaining meals due to be taken by your child for that week.

### Credit Balance

If your balance is in credit, please ensure you have enough credit for any remaining meals due to be taken by your child for that week. If not, a further payment will need to be paid to bring your account up to date.

## Fish Friday Payments

Please remember Fish Friday is paid **in advance of the term**. Fish Friday for next term commencing 31st October is **£17.50 (7 weeks)**. Please follow the same instructions above.





Congratulations to the following children who were praised this week. Children who are attending school from each class have their work placed on Mr Hewitt's Wonder Wall to celebrate their achievements.

### Pupil of the Week

### Wonder Wall

<b>Nursery</b>	<b>James Green</b>	<b>Harry Keane</b>
<b>Reception</b>	<b>Esme Pennington</b>	<b>Sophia-Rose Comiskey</b>
<b>Y1</b>	<b>Halle Hughes</b>	<b>Jessica Gaskell</b>
<b>Y2</b>	<b>Billy Hewson</b>	<b>Emili Bazi</b>
<b>Y3</b>	<b>Seth Ashworth</b>	<b>Leela Kavanagh</b>
<b>Y4</b>	<b>Olly Lemaire</b>	<b>Ayva Lowery</b>
<b>Y5</b>	<b>Megan Roberts</b>	<b>Charlotte Ford</b>
<b>Y6</b>	<b>Lucas Berry</b>	<b>Amelia Housbey</b>

### School opening hours from September

To ensure that we achieve the new DFE statutory school hours for primary schools we have brought the start time of the school day forward to 8:45am for all classes.

Doors will open at 8:40am and it is expected that all children are settled for registration at 8:45am. Classroom doors will be closed at 8:55am and children arriving after this time will come through the office and be marked as late.

Nursery 15 hours children will be collected at 11:40am, with 30 hours children being collected at 3pm. The EYFS door will remain open from 3pm- 3:15pm so Reception children can be collected.

The end of the school day for children Year 1—Year 6 is 3:15pm.



## School Diary—Next Week in School

### Monday 10th October

Y1 / Y2 Football (4 of 5) 3:15-4:15

Choir

Drumming 3:15-4:15

### Thursday 13th October

Parents Evening 1:30-4:30pm

### Tuesday 11th October

Y3 / Y4 Football (5 of 5) 3:15-4:15

Guitar Lessons

Digital Leaders Meeting 3:15-4:00

### Friday 14th October

Rocksteady Music

### Wednesday 12th October

String Lessons

Brass Lessons

Toddler Group 9:30-11:00am

Height and Weight (Reception & Year 6)

Fencing Session (5 of 5)

Drumming 3:15-4:15

Parents Evening 3:30-6:30pm



## Term Dates for 2022-2023

Autumn Term 2022	Opens on Mon 5 Sept	Closes on Thurs 20 Oct
Autumn Term 2022	Mon 31 Oct	Wed 21 Dec
Spring Term 2023	Wed 4 Jan	Thurs 9 Feb
Spring Term 2023	Mon 20 Feb	Fri 31 March
Summer Term 2023	Mon 17 April	Thurs 25 May
Summer Term 2023	Mon 5 June	Wed 19 July

School also closed:

May Day—Monday 1st May 2023



# Free School Meals & Pupil Premium

## Free School Meals

Your child will be eligible for free school meals if you (or your partner) are in receipt of any of the following:

- Income Support
- Income-based Jobseeker's Allowance
- Income-related Employment and Support Allowance
- support under Part VI of the Immigration and Asylum Act 1999
- the guaranteed element of Pension Credit
- Child Tax Credit (but not Working Tax Credit) and your annual gross income (as assessed by HM Revenue and Customs) is not more than £16,190
- Working Tax Credit 'run on' - paid for 4 weeks after you stop qualifying for Working Tax Credit

Universal Credit and net earnings, from your last assessment period, is not more than £616.67 per month. (If your household's net earnings change each month then they should not exceed £1,233.34 in the last two consecutive months or £1,850 in the past 3 months).

Once eligible, your child will continue to receive free school meals in primary or secondary school until the end of their current phase of education, i.e. primary (Year 6) or secondary (Year 11). After this period, you may need to reapply.

## Pupil Premium

Your child's school will also receive additional funding if you are in receipt of a qualifying award listed above. It is therefore important that you claim free school meals and the pupil premium even if your child does not wish to take a school meal.

### Important note for parents of children in Reception, Y1 and Y2

As you are aware, all children in Reception, Year 1 and Year 2 are entitled to a universal free school meal. Parents and carers who receive the qualifying benefits (listed above) should still make an application for free school meals. This is because our school can get additional government funding dependent on the number of children that qualify for statutory free school meals (based on your entitlement to certain benefits and awards).

**Even if your child does not wish to take a universal free meal please still claim to enable school to get the funding.**

### **How to Apply**

You can apply online as part of your initial claim for housing benefit / council tax reduction or you can complete the separate free school meals application form. Your eligibility will be checked to claim free school meals electronically so you will not normally need to provide supporting evidence. If you are successful you and our school will be informed of the decision.

### **Contact details**

Telephone:	01744 676666
Write to:	St Helens Council, Revenues and Benefits, PO Box 10592, Nottingham NG6 6DP
Email:	educationbenefits@sthelens.gov.uk