



BILLINGE CHAPEL END



— SCHOOL & NURSERY —

WEEKLY NEWSLETTER 27th October 2023

Website: www.chapelend.st-helens.sch.uk

Email: chapelend@sthelens.org.uk

Telephone: 01744 678230

Themed Weeks

At Chapel End Primary School we provide a broad curriculum offer. Part of this offer is for all of our children to learn about events from different religions, traditions, cultures and ways of life from around the globe.

Week Beginning

6.11.23

Valuing Difference

13.11.23

Anti-Bullying Week

20.11.23

Road Safety Assembly

27.11.23

Protected Characteristics

4.12.23

Advent

11.12.23

The Christmas Story

Dates for your diary

27.10.23

School closes for half term

7.11.23

School re-opens

7.11.23

Flu Vaccination

8.11.23

Autumn Disco

13.11.23

Wear odd socks—Antibullying

20.11.23

Mental Health Support Team drop in session 2.30pm

Polite Notice

Important reminder not to drop off or park near the school gates or on the yellow zig zag lines as they are prohibited and are there to keep our children safe, it is a blind bend.

Many thanks for your co-operation.

Also please be mindful of the residents when parking near school as we have had a complaint regarding double parking and a near miss. Please take care and keep our children safe .



Easy Fundraising App

The PTFA are registered with an organisation called Easy Fundraising and we would love it if you could use it to support school. The concept is very simple, you need to download the Easy Fundraising app then nominate Billinge Chapel End and PTFA as your chosen cause. If you do this before the **31st October**, the school will be given an automatic £2 bonus donation without you spending anything.

If you then choose to enter online shopping sites through the Easy Fundraising app, the school will be given a percentage of your spending. Insurance/Utility Bill sites such as Compare the Market are particularly good and school receives up to £15 each time you use the app.

Many thanks for your anticipated support, we know that in the current climate it is difficult to support lots of charities but this is an opportunity to help out that doesn't cost you anything—literally money for nothing!!



easyfundraising

School meals price increase

The council have notified us that as from 1st November the price of school meals will increase to £2.60. This means that weekly dinner money will be £13.00.



Next half term our PSHE/Coram Scarf lessons will focus on 'Valuing Difference'. Here are some of the themes the children will be exploring...

EYFS	Year 1	Year 2	Year 3	Year 4	Year 5	Year 6
Similarities and difference Celebrating difference Showing kindness	Recognising, valuing and celebrating difference Developing respect and accepting others Bullying and getting help	Being kind and helping others Celebrating difference People who help us Listening Skills	Recognising and respecting diversity Being respectful and tolerant My community	Recognising and celebrating difference (including religions and cultural difference) Understanding and challenging stereotypes	Recognising and celebrating difference, including religions and cultural Influence and pressure of social media	Recognising and celebrating difference Recognising and reflecting on prejudice-based bullying Understanding Bystander

Scholastic Book Club



Our new Scholastic Book Club is up and running!

Last week your child will have brought home the latest Scholastic Book Club leaflet.

Go to <https://schools.scholastic.co.uk/billinge-chapel-end/digital-book-club> to browse the latest books and your order will then be delivered to school. Please place your order by **Friday 3rd November**. Thank you.

CHILDREN IN NEED

BBC Children in Need is back this year on **Friday 17th November** !

In exchange for a donation (payable via SchoolMoney), children are invited to come to school dressed in either spots or pyjamas (or a combination of both). By taking part, we can support children and young people experiencing rising poverty and mental health concerns due to the cost of living crisis.

With our help, BBC Children in Need can continue funding vital projects so that every child has the chance to thrive.



Save the date

On **Monday 20th November at 2:30pm**, our Educational Mental Health Practitioner, Emma Stewart, will be holding a 'drop in session' for you to come and meet her. Please come along to have a drink, a biscuit and a chat.

To find out about Emma's role and the role of the Mental Health Support team please follow the following link which will take you to our Wellbeing page on our website: <https://www.chapelend.st-helens.sch.uk/page/wellbeing/125170>

St Aidan's Food Pantry

We are now getting ready to open a Food Pantry at St Aidan's in November (date still to be confirmed). The pantry will be called Aidan's Pantry and will be open on a Friday afternoon 14.00 - 16.00. The food pantry is being opened and funded by the Lifted Mission under the umbrella of Church Wigan and Wigan Deanery Trust. The difference between a Food Pantry and Food Bank is that the pantry is open to everyone. Anyone wishing to shop at the pantry will pay £5 per year and will be allowed to buy 15 items for £3 every week. All the food is donated by supermarkets and factories like Heinz. This not only stops food being sent to land fill sites but it also helps families of all ages to have access to food at a very low cost. There have been a number of pantries that have been opened throughout Church Wigan and have been proved not only to be successful in feeding people but become a social event where people can meet and have a chat. Once established, we hope to be able to expand our Pantry into much more. Through the Lifted Mission we have access to lots of other organisations who can offer help and advice like Christians' Against Poverty. We really want to make our pantry into a warm and welcoming place where the people of Billinge can not only have access to good cheap food but a place to make friends. However you want to use the Pantry everyone will be welcome.

Joan Roberts, St Aidan's



Dates for the Diary

November

7.11.23-school re-opens
7.11.23-Flu Vaccination
8.11.23-Autumn Disco
10.11.23-Year 6 Remembrance Service
13.11.23-Wear Odd Socks—Anti bullying
17.11.23-Children in Need
20.11.23-Mental Health Support Team drop in session 2.30pm

December

8.12.23 Christmas Fair & Christmas Jumper Day
12.12.23-KS1 Nativity
13.12.23 & 14.12.23-EYFS Nativity
14.12.23-Tea with Santa
15.12.23-Christmas Dinner
18.12.23-Year 5 & 6 Christmas Party
19.12.23-EYFS & KS1 Christmas Party
20.12.23-Year 3 & 4 Christmas Party
21.12.23-KS2 Morning Carol service 8.30am
21.12.23-School closes at 2pm
(re-opens Monday 8th January)

PTFA News

Autumn Disco



We will be holding our Autumn Disco on **Wednesday 8th November 5:00-6:15pm**. Tickets are priced at £2.00 which will include a drink and a snack for the children. Volunteers of parental help will be essential for this event to go ahead. If you can help at the disco, please inform the office staff. Tickets are available to purchase on School Money.

Christmas Fair



This year's Christmas Fair will take place on **Friday 8th December from 3:15pm**. As in previous years, we will be collecting bottles of wine, filled jam jars, Christmas chocolate/sweets and other Christmas groceries. We will welcome donations at anytime after the half term break.

Tea with Santa



Unfortunately, Santa cannot make it to our Christmas Fair this year so we will be unable to open our Grotto. However, Santa has very kindly agreed to make it a Christmas to remember for all pupils at Chapel End by visiting us on **Thursday 14th December at 3:15pm** to have tea with the children - more information to follow after half term.



Our school Value of this half term is Kindness





Pupil of the Week

Wonder Wall

Nursery

Harper Swift

Emilia Grundy

Reception

Blake Hilton

Etta Green

Y1

Darcie-Grace Bridge

Soren Hampson

Y2

Darcy-Rose Millington

Alan Mehrjouei

Y3

Alfie Baddeley

Isaac Williams

Y4

Sofia Vernazza

Sonny McMinnis

Y5

Alice Liptrot

Laila Clarke

Y6

Megan Leigh

Millie Wood

Class Attendance for w/c 16th October

<u>Class</u>	<u>% attendance for week</u>
Nursery	86.0
Reception	92.2
Year One	100
Year Two	100
Year Three	94.8
Year Four	97.4
Year Five	94.1
Year Six	95.6

WOW! Well done to Year 1 & 2 for 100% Attendance and Reception and Year 4 for hitting our 96% attendance target!

Volunteers

A number of classes in school need volunteers to help with reading. If you are able to spare a morning or afternoon, or even an hour to help in school, we would be extremely grateful. Please inform Mrs Montrose when you would be able to help and if you have a preference for a particular age group.

Thank you for your support.



School Diary — First week back

Monday 6th November

Inset day (school closed)

Tuesday 7th November

Flu vaccine

Keyboard lessons

Guitar lessons

Year 1 & 2 Boccia & Kurling (1 of 5)

Wednesday 8th November

Toddler group 9.30-11am

Strings lessons

Thursday 9th November

Swimming Year 5 (7 of 12)

Drumming lessons 2.30-3.30pm

Years 3,4 & 5 Boccia & Kurling (1of 5)

Friday 10th November

Choir 12-12.30pm



Term Dates for 2023-2024

	Opens on	Closes on
Autumn Term 2023	Wed 6 Sept	Fri 27 Oct
Autumn Term 2023	Tues 7 Nov	Thurs 21 Dec
Spring Term 2024	Mon 8 Jan	Fri 9 Feb
Spring Term 2024	Mon 19 Feb	Thurs 28 March
Summer Term 2024	Mon 15 April	Thurs 23 May
Summer Term 2024	Mon 3 June	Tues 23 July

School also closed:
May Day—Monday 6th May 2024

Term Dates for 2024-2025

	Opens on	Closes on
Autumn Term 2024	Wed 4 Sept	Thurs 24 Oct
Autumn Term 2024	Mon 4 Nov	Fri 20 Dec
Spring Term 2025	Mon 6 Jan	Thurs 13 Feb
Spring Term 2025	Mon 24 Feb	Fri 4 April
Summer Term 2025	Tues 22 April	Thurs 22 May
Summer Term 2025	Mon 2 June	Tues 22 July

School also closed:
May Day—Monday 5th May 2025

These term date cards are now available to collect at the school office.

Y6 Residential - 20th to 22nd May 2024

Manor Adventure, Willersley Castle, Peak District

For the children that are attending the Y6 residential in May 2024, the payment balance has been added to your child's SchoolMoney account. It has been set up so that you can pay as much as you want, when you want, but must be paid in full by 31st March 2024.

Spending money of 3 x £1 coins (in an envelope please) can be handed to the school office any time from now until May.

A meeting will be arranged for April 2024 with detailed information regarding activities, room arrangements and kit lists. You will also be able to ask any questions you may have and discuss, if necessary, any special needs.

Breakfast Club

Breakfast Club runs from 7.30-8.50am each morning. It costs £6 per session and should be paid IN ADVANCE via SchoolMoney.

After School Club

After School Club runs from 3.15-5.30pm each evening. It costs £8 per session and, like the Breakfast Club, should be paid IN ADVANCE via SchoolMoney.

Both of these clubs are extremely popular and we are limited to numbers.

IMPORTANT—We do have procedures in place for booking places in both of these clubs. Firstly, please email school by 1.00pm on a Friday for the sessions you would like booking for the following week (chapelend@sthelens.org.uk). The costs for both clubs are shown above. When you book by email you then need to total the cost of your sessions and add this to your child's SchoolMoney account. You can add this in the Club top-up section on the account.

If you need to attend Breakfast Club in an emergency, on a day that you haven't booked, please ring Breakfast Club on that morning and see if there is a place available. Likewise, if you need After School Club and you haven't booked in please ring school and we can see if there is a space.

If you need to cancel a booking on the day please ring school and speak to a member of staff to inform them that you don't need the place on that day. This place can then be offered to another child. If you need to cancel a future booking you can do this by email.

Please be aware that staff have the authority to refuse a booking if the SchoolMoney account is not up to date.

Change of Meal Arrangements

Please note that meal arrangements can only be changed after each school holiday.

If you would like to change your child's meal arrangements after Christmas, please email school at chapelend@sthelens.org.uk by Wednesday 20th December.

Fish Friday Payments

Please remember Fish Friday is paid **in advance of the term.**

Fish Friday for next half term is **£15.60 (6 weeks).**



Year 5 School Swimming Lessons

Lessons take place on Thursday mornings from September to December.

The dates are as follows:

9th November 2023

16th November 2023

23rd November 2023

30th November 2023

7th December 2023

14th December 2023

The swimming lessons will take place at Ashton Leisure Centre and transport will be arranged by school.

Below are the swimwear requirements set by the local authority.

'Pupils should be encouraged to wear swimming caps during the lessons or hair must be tied back. Correct swimwear must be worn at all times.

Girls must wear a one-piece swimsuit (no two piece at all). No Wet Suits.

Boys must wear swimming trunks or shorts of no longer than mid thigh length with no pockets (no Bermudas or long shorts are acceptable as these can become dangerous when the pockets become full of water). No Wet Suits.

No Jewellery to be worn including all types of earrings.

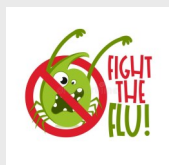
Any child attending the pool without the correct equipment will not be allowed to swim.'

Any armbands/floats etc will be provided.



Nasal Flu Immunisations

Please see the poster at the bottom of the newsletter regarding this years Nasal Flu Programme. The immunisation team will be visiting our school on Tuesday 7th November. Your child will only receive it if you have given consent.





Winter Uniform



After the half term holiday all children should be in full winter uniform.

Boys Uniform

Red round-neck school jumper preferably displaying the Chapel End Primary School emblem.

White polo T-shirt

Grey trousers

Plain grey socks

Black school shoes

Girls Uniform

Red round-neck school jumper or red school cardigan preferably displaying the Chapel End Primary School emblem.

White polo T-shirt

Plain grey pinafore, grey skirt (appropriate length) or grey trousers

Grey tights

Grey socks (recommended for winter)

Black school shoes

Haircuts

We do not permit children to have extreme haircuts such as shaved patterns or Mohican styles which cause a distraction to learning, as they are inappropriate for the school setting. Any child, male or female, with long hair length will be asked to tie their hair up.

Hair Accessories

We ask that hair accessories such as headbands, clips, bows and bobbles are red or black in colour. Please also ensure that they are kept to an acceptable size and keep them as plain as possible.

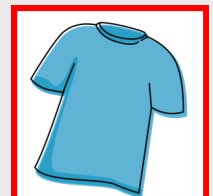
Nursery

Children of nursery age are permitted to wear black or grey jogging trousers to support gross motor skill activities and toilet training.



Underlayers

Due to the weather becoming colder, we would like to remind parents and carers that children can wear underlayers sometimes referred to as 'skins' beneath their normal uniform or PE kit.



St Helens Immunisation Team

We will be attending your child's school between September and December.

All children in nursery to year 11 will be offered a Flu Nasal Spray to protect them against Flu this winter!

We will be in your child's school on: **TUESDAY 7TH NOVEMBER 2023**

Contact details

St Helens Immunisation Team - Telephone: 01744 415 645
(Monday to Friday, 9am to 5pm)

Flu: 5 reasons to vaccinate your child

1. Protect your child

The vaccine will help protect your child against flu and serious complications such as bronchitis and pneumonia

2. Protect you, your family and friends

Vaccinating your child will help protect more vulnerable friends and family

3. No injection needed

The nasal spray is painless and easy to have

4. It's better than having flu

The nasal spray helps protect against flu, has been given to millions of children worldwide and has an excellent safety record

5. Avoid costs

If your child gets flu, you may have to take time off work or arrange alternative childcare



All About Family St Helens magazine

Please find attached the link to the Autumn edition of All About Family St Helens magazine, Inside you will find advice on:

Family Events in the area, New Children's Books, Back to School Anxiety, Bedtime Routine Tips, Adult Education - Back to School, Nugent - Tackling Poverty in Your Community, A Day in the Life of an Aquarium Ranger at World Museum.

www.allabout-family.co.uk/st-helens/

Autumn '23



Our **ComputerXplorers** Holiday Tech Clubs

ComputerXplorers leads the way in providing technology-based activities that are both inspirational and educational. Our unique brand of hands-on programmes are always full of fun and interaction. We encourage children to find out what's behind the technology, building in collaboration, creativity, critical thinking and confidence along the way!

AUTUMN TECH CLUB

ST HELENS

Rainford High School

Higher Ln,
Rainford, WA11 8NY

Wed 1st & Thurs 2nd November

9am-3pm (half days available)

Morning sessions include Coding & Game Design with a seasonal **MINECRAFT** afternoon challenge!

Scan the QR or follow the link for full information & bookings:

bolton.computerexplorers.co.uk



computerexplorers.co.uk/bolton-wigan

Follow us @CompXBolton

T: 01942 676407

E: Bolton@computerexplorers.co.uk

ComputerXplorers Bolton & Wigan, 621 Leigh Road, Leigh, WN7 1UA





 **30th October - 3rd November**
9:30am - 3:30pm or 8:00am to 6:00pm

 **Reception - Year 6**

 **Childcare vouchers & tax-free childcare schemes accepted**



OCTOBER HALF-TERM HOLIDAY COURSES

Rivington Primary School

Tennis Street North, St Helens
WA10 6LF

£21
a day

Book a full week
& get 1 day **FREE**

Scan to book



www.wearelsc.co.uk/october

 0800 032 1806

 info@wearelsc.co.uk

   @LSCMerseyside

St Helens Family Hub and Children's Centre

Offer 30th October to 4th November 2023

Monday

AM

Baby Group
(0-12mths)
9.30am - 10.30am
Newton Family Hub

Slow Cooker
Challenge
(Due to popularity
places are limited)
11.30am - 1.30pm
Central Link Family
Hub

Tuesday

AM

Spooky Mini Chef's
(4-11yrs)
10.30am - 11.30am
Central Link Family
Hub

Baby Group
(0-12mths)
10.00am - 11.00am
Sutton Family Hub

Read and Rhyme
10.30am
Eccleston Library



Wednesday

AM

Coffee/Tea Tots
10.00am - 11.00am
Sutton Family Hub

Sensory Baby Group
(0-12mths)
10.00am - 11.00am
Parr Children's
Centre

Let's Get Ready for
Nursery
(6-36mths)
10.00am - 11.30am
Newton Family Hub

Thursday

AM

Sensory Baby Group
(0-12mths)
9.30am - 10.30am
Sutton Family Hub

Let's Get Ready for
Nursery
9.30am - 11.00am
Sutton Family Hub

Baby Group
(0-12mths)
10.00am - 11.00am
Parr Children's Centre

Spooky Silent Disco
(2-11yrs)
10.30pm - 11.30am
Thatto Heath
Children's Centre

Friday

AM

Sensory Baby Group
(0-12mths)
10.00am - 11.00am
Haydock Library

Autumn Crafts
including
refreshments
(2-14yrs)
10.00am - 11.00am
Newton Family Hub



Saturday

AM

Parent's In Mind
9.00am - 12.00pm
Sutton Family Hub

M.A.T.CH Group
(0-11yrs)
10.00am - 12.00pm
Sutton Family Hub

Change Grow Live
Drop-in clinic
(0-18yrs)
10.00am - 1.00pm
Sutton Family Hub

St Helens Family Hub and Children's Centre

Offer 30th October to 4th November 2023

Monday

PM

Sensory Baby Group
(0-12mths)
1.30pm - 2.30pm
Newton Family Hub

Little Wizz Kids
1.30pm - 2.30pm
Sutton Family Hub

Musical Instrument
Making
3.30pm - 4.30pm
(0 - 11yrs)
Parr Children's
Centre

Tuesday

PM

Baby Group
(0-12mths)
1.30pm - 2.30pm
Central Link Family
Hub

Sensory Baby Group
(0-12mths)
1.30pm - 2.30pm
Moss Bank
Children's Centre



Wednesday

PM

Autumn Crafts
including
refreshments
(2 - 14yrs)
1.00pm - 2.30pm
Fourways Children's
Centre

Spooky Silent Disco
(2-11yrs)
2.30pm - 3.30pm
Sutton Family Hub

Thursday

PM

Baby Group
(0-12mths)
1.30pm - 2.30pm
Moss Bank
Children's Centre

Slow Cooker
Challenge
(Due to popularity
places are limited)
1.30pm - 3.30pm
Sutton Family Hub

Friday

PM

Slow Cooker
Challenge (Due to
popularity places are
limited)
1.30pm - 3.30pm
Newton Family Hub


Mini Chefs
(Invite only)
3.00pm - 4.30pm
Sutton Family Hub



Saturday

PM





St Helens Family Hub and Children's Centre Offer 30th October to 4th November 2023

If you have any questions relating to our activities, or if you would like to reserve a place on any of the Family Hub and Children's Centre groups, please call Parr Children's Centre on **01744 671788** or Central Link Family Hub on **01744 673445**. Alternatively, you can message us via our Facebook page! **St Helens Family Hub and Children's Centres**

Group Descriptions

Autumn Crafts - an interactive arts and craft session using natural resources.

Baby Group - a group aimed at babies aged 0-12 months to promote bonding and developing new skills. Meeting new mums/dads and learning through play.

Musical Instrument Making - enjoy making your own musical instruments using a variety of resources. Maybe join a band!

Spooky Mini Chef's - a fun and interactive cookery session for children aged 4 - 11 yrs.

Sensory Baby Group - a fun and stimulating sensory session for babies 0-12 months.

Spooky Silent Disco - enjoy dancing to your individual favourite music via wireless headphones.

Slow Cooker Challenge - enjoy preparing, cooking and eating affordable healthy meals for the whole family. All participants receive a free slow cooker on completion.

Coffee/Tea Tots - is facilitated within our family friendly café where you can relax and enjoy free healthy food and drinks; toys and books are available for little ones.

Let's Get Ready for Nursery - fun and interactive sessions which will support you and your child to become school ready and support your child's learning through play, extend their creative thinking as well as encouraging practical tasks.

Little Wizz Kids - a fun, stimulating and interactive play, learning and development session for new-born babies up to children aged 36 months. The group will support families to build attachment and positive parenting behaviours; strengthen parent-child interaction within the Early Learning Environment, and support school readiness.





Letter to parents and guardians from Merseyside Police re. Halloween and Bonfire Night

We are writing to all parents and guardians to ask for your help over the upcoming Halloween and Bonfire Night period.

We want everyone to have fun and we'll be working hard to keep you safe, but we need your help:

Know where your children are

- Encourage kids to go to local events that are being organised, or try a spooky film together
- If your children are going out (particularly on the 30th and 31st of October), make sure you know where they're going. If possible, drop them off and pick them up
- Don't let your children hang around the street
- If they're going somewhere local – walk there with them
- Have an agreed time when they need to be home
- Don't buy fireworks or eggs and flour for them, and don't let them take it out of the house

Know the risks

- Throwing things at cars, buses, shops and houses can hurt people – drivers might swerve if they get distracted and cause a crash, or someone might get hurt by broken glass (and scratched paintwork can be very expensive to fix)
- Getting into trouble with the police can lead to a criminal record, which means not being able to go on holiday to countries like the USA, and not being able to do certain jobs
- Messing around with fireworks is dangerous – some burn as hot as 1,200 degrees - hot enough to melt glass and cause serious or fatal injuries

Know the law

If a young person under the age of 16 commits any of the offences below, the parent/guardian will have to pay the fine.

- A person under the age of 16 can be arrested and fined if found with an unlit firework
- A person under the age of 16 can also be arrested and fined if they throw or light a firework or make a bonfire
- A person under the age of 16 can be arrested and fined for throwing things like eggs, flour, paint or other objects at people, vehicles or property

Thank you for your help and support. By working together, we can keep your children safe this Halloween and Bonfire Night.

Merseyside Police