

# B ILLINGE CHAPEL END

## — SCHOOL & NURSERY —

WEEKLY NEWSLETTER

22nd January 2021



### Themed weeks

At Chapel End Primary School we provide a broad curriculum offer. Part of this offer is for all of our children to learn about events from different religions, traditions, cultures and ways of life from around the globe. Teachers will incorporate activities linked to these themes into blended learning.

### Week beg 25/1

Burns Night

Holocaust Memorial Day

### Week beg 1/2

National Story Telling Week

Children's Mental Health Week

### Week beg 8/2

Safer Internet Week

Chinese New Year



From Monday 25th January, staff at Chapel End Primary have been given access to home testing kits.

Staff can use these kits twice a week to obtain rapid results in relation to the COVID 19 virus. I am sure that you will agree this is just one more step that we are taking to keep our school community as safe as possible.



During these ever-changing times, more and more families are experiencing job cuts and reduced hours at work. To support our families, Chapel End has linked up with St Helens Foodbank and we are now a 'voucher school'. Families in need of support can collect vouchers discretely from our school office, which they can then use at one of the many foodbanks located around the borough. Please visit <https://sthelens.foodbank.org.uk/> for more information.



During lockdown children will be accessing lots of work online. It is imperative that we keep all of our children safe whilst using the internet.

For advice and guidance about e-safety please visit the safety section of our school website:

[Billinge Chapel End Primary School: E-Safety](#)



**CORONAVIRUS**  
**STAY HOME**  
**PROTECT THE NHS**  
**SAVE LIVES**

During these challenging times, we want to support everyone in our community and help them to be safe and healthy. For up-to-date advice on how to stay safe please follow the information on Gov.uk.

National lockdown: Stay at Home - GOV.UK ([www.gov.uk](http://www.gov.uk))

If any families are struggling financially at the moment and would like to apply for a food hamper, please contact : [Kellyfield11@yahoo.uk](mailto:Kellyfield11@yahoo.uk)

Hampers will be dropped off at school for families to collect discretely at a time that is convenient.





## **PTFA NEWS**

### **Bedding Plants**

In these uncertain times where we never know which shops are going to be open and when indeed they may have to close again, the PTFA are giving you the opportunity to purchase plants for your gardens without having to leave the comfort of your own home. For over 15 years, we have been ordering bedding plants, hanging baskets, vegetable plants and much more from the same firm and the quality has always been excellent.

We thought that once again it may be particularly important to make our gardens as colourful as possible, especially if we are going to spend as much time in them as last year so last week we sent home our order forms via email. In a change to previous years, we will be accepting orders via email and payment through school money but please note that any friends or family members are also very welcome to place orders and we will accept paper copies and cheques if payments can't be linked to a child's school money account.

To also make things easier we will be offering a local delivery service (within 3 miles of school) for an extra £3, this will hopefully help anyone who is still unsure about going out to public places.

As all of our usual PTFA activities are currently on hold then your support for this initiative is vital, please look out for the email!

### **Easy Fundraising**

Reminder: The PTFA have registered with an organisation called Easy Fundraising and we would love it if you could help us whilst you are doing your shopping.

The concept is very simple, you need to download the Easy Fundraising app and then nominate Billinge Chapel End PTFA as your chosen cause, after that for any shopping you do through the app a donation will be given to the PTFA. This is no extra cost to you but could be really beneficial to us, especially in the current climate where none of our usual fundraisers are able to take place.

A huge thank you to everyone who has already registered with Easy Fundraising. If you haven't registered yet please follow the information above.

Thank you for your continued support.







Congratulations to the following children who were praised this week. Children who are attending school from each class have their work placed on Mr Hewitt's Wonder Wall to celebrate their achievements. Also, we have a virtual Wonder Wall attached to this letter to celebrate children who are learning remotely during lockdown.

	<b><u>School</u></b> <b><u>Wonder Wall</u></b>	<b><u>Virtual</u></b> <b><u>Wonder Wall</u></b>
<b>Nursery</b>	James Barnes	Tobias Cottington
<b>Reception</b>	Martha Hamilton	Daisy O'Brien
<b>Y1</b>	Whole Class	Miles Roby
<b>Y2</b>	Victoria Malowicz	Jack Geoghegan
<b>Y3</b>	Theo Boylan-McCann	Ty Thomson
<b>Y4</b>	Amelia Ennis	Joseph Fisher
<b>Y5</b>	Alex Watson	Thomas Liptrot
<b>Y6</b>	Chloe Torpey	Adam Burrows

### **Passports for Under 2s**

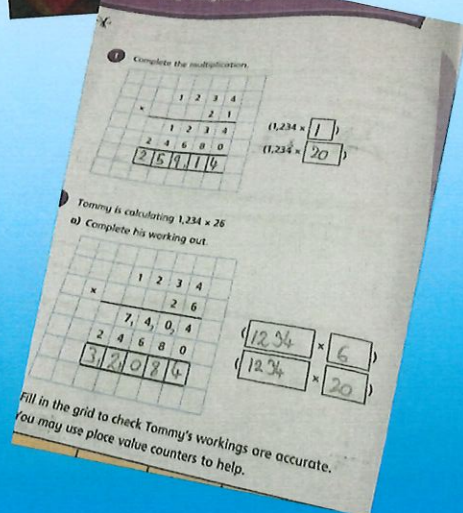
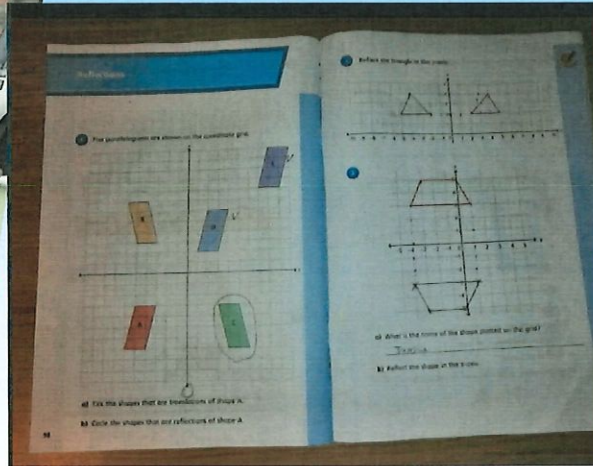


**Please see the information page at the end of this newsletter which gives information about school funded places in St Helens.**

*C. Hewitt*



# Our Wonder Wall





# Passport for 2's

Your Passport to Funded  
Early Education Entitlement



Passport



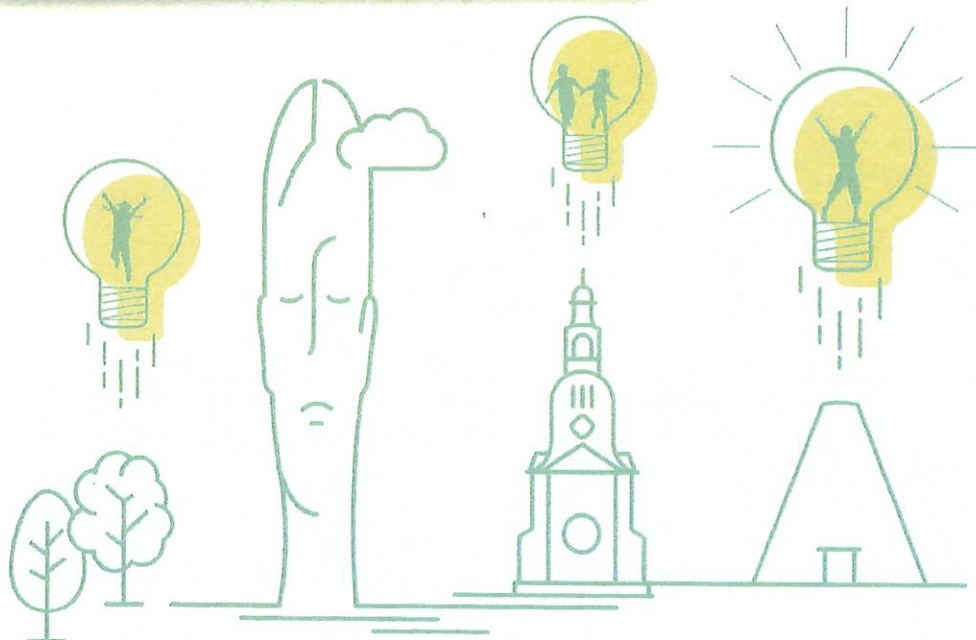
Ensuring every child  
has a positive start in life.

If you are eligible to receive funded early education you will receive your child's passport in the post. Once this has been received, you can simply take it to the nursery /childminder of your choice to arrange a start date.

If you haven't received a passport in the post but feel you meet the eligibility criteria, please call the Early Education team on 01744 676541 or alternatively you can apply online.

## Don't miss out!

For more information, and to check if your child is eligible, visit [www.sthelens.gov.uk/passportfor2](http://www.sthelens.gov.uk/passportfor2)



ST HELENS  
BOROUGH COUNCIL

Childcare  
ChOices